

Package content



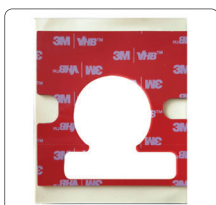
SQ605RF(WB) Wireless dial room thermostat



1 x Installer Manual



Fixing Screws



3M Sticker-self adhesive tape



AAAA batteries x 2

Icons used in this manual:



Safety



Important info



Your benefit

Product Description

Thank you for purchasing the SQ605RF(WB) Thermostat. This thermostat is a device that let's you customize the heating and cooling of your home as needed. The SQ605RF(WB) is a wireless dial thermostat used for underfloor heating systems. The thermostat is compatible in offline mode with wiring center CB12RF and KL08RF with CO10RF and KLO4RF extension. Repeater RE10RF can be used in offline systems to improve signal and range. Easy to operate using the conventional adjusting dial, it offers unique control convenience for your underfloor heating system. We hope you enjoy our product.

Product Compliance

This product complies with the essential requirements and other relevant provisions of RED Directives 2014/53/EU and 2011/65/EU. The full text of the EU Declaration of Conformity is available at the following internet address: www.saluslegal.com

(P) 2405MHz-2480MHz; <14dBm (Zigbee)



Safety Information

Use in accordance to national and EU regulations. Use the device as intended, keeping it in dry condition. Product for indoor use only. Installation must be carried out by a qualified person in accordance to national and EU regulations. Disconnect your equipment before cleaning it with a dry cloth.

Mounting



The ideal position to locate the thermostat is 1,5 m above floor level, far from heating or cooling sources. The thermostat can't be exposed to sunlight or any extreme conditions, for example draft. It should be mounted in a location where the thermostat is easily accessible and away from direct sunlight.



For wall mounting, to mount the thermostat you can use included accessories (mounting screws or self-adhesive tape). Remove back cover to mount the plate to the wall. After this just attach thermostat to the plate (it has built-in magnet).



User interface

Front



1. Temperature scale
2. Dial button
3. LED

Temperature is set by turning the knob to wanted temperature: 5° - 35°C.



For PDF Installation guide
Please go to
www.saluscontrols.com

SALUS Controls is a member of the Computing Group
Maintaining a policy of continuous product development SALUS Controls plc reserve the right to
change specification, design and materials of products listed in this brochure without prior notice.

www.saluscontrols.com



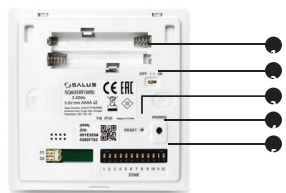
SALUS Controls plc
Units 8-10 Northfieldbusiness
Park Forge Way, Parkgate
Rotherham
S60 1SD
United Kingdom
Germany
Dieselstrasse 34,
63165 Mühldorf am Main,
SALUS Controls GmbH

Wireless dial room thermostat Model: SQ605RF(WB)



INSTALLER MANUAL

Backplate



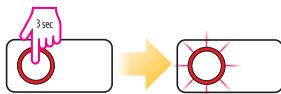
1. Batteries
2. ON/OFF Switch
3. RESET Button
4. Pairing Button
5. Jumpers (for zone selection)

Pairing (offline mode)

- 1 Please install the wiring centre according to the instructions attached to the product.



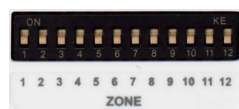
- 2a For KL08RF: Press and hold the C010RF button for 3 seconds, until it blinks red, to open the ZigBee network.



- 2b For CB12RF: Select Master then Press and hold the network button for 3 seconds, until red ZigBee LED blinks, to open the ZigBee network.

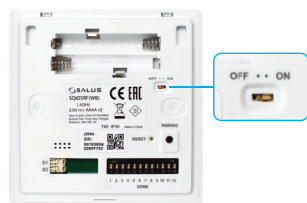


- 3 Set the jumpers:
Jumper 1=zone 1, Jumper 2=zone 2, etc.
By setting up more than one jumper, the thermostat will be able to control multiple zones.

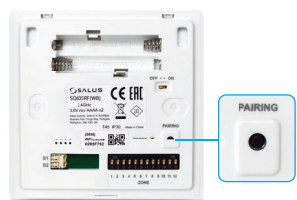


- 4 Carefully insert the batteries into the thermostat.

- 5 Turn the thermostat ON by using the on/off switch as seen below. The default position is OFF.



- 6 Press the PAIRING button between 3 to 10 seconds to start the pairing process. When PAIRING button is released, LED will blink red (scanning for network) and blink orange (device pairing). After orange blink the LED will stop and thermostat is paired.



- i** If the thermostat blinks red and green after orange, the zone is occupied. To replace the zone, press the pairing button once more within 60 seconds.

- 7a For KL08RF: When all the thermostats are paired, press and hold the C010RF coordinator button for 3 seconds, until LED is solid red, to close the ZigBee network.



- 7b For CB12RF: When all the thermostats are paired, press and hold the network button for 3 seconds, to close the ZigBee network. ZigBee LED turns solid red.



- i** If the thermostat fails to join the network within 10 minutes, then the thermostat quitted scanning the network. To restart the network scanning process, please hold pressed the pairing button for 3 to 10 seconds.

Operation of the Pairing Button

Behavior	Function
Short press: press and hold the button less than 3 seconds.	If the device is not connected to the network: It will indicate no network state. White LED blinks. If the device is connected to the network: It will indicate heating or cooling state if thermostat is calling for heating (red LED blinks) or cooling (blue LED blinks).
Long press: press and hold the button longer than 3s but not more than 10s.	If the device it's not connected to the network: Start scanning the network. Red LED blinks. If the device is connected to the network: Start Identify. Green LED blinks. If the device is in the process of identifying: Stop Identify. LED turns off.
Extreme long press: press and hold the button longer than 10 seconds.	LED turns short orange: Start factory reset. Device leaves network and resets all parameters.

Error and LED indication from FW v2.4

Scenario	LED status
Idle	LED is off.
Scanning Network	Red LED blinks 3 times quickly, then pauses and repeats until network is found.
Device Pairing	Orange LED blinks 4-5 times per zone until pairing is successful.
Identifying	Green LED blinks in a slow, steady rhythm.
No Network	White LED blinks quickly 4 times.
Lost Parent	Red LED blinks 2 times then repeats.
Lost link with Coordinator	Red LED blinks 3 times then repeats.
Lost Link with Paired device	Red LED blinks 4 times then repeats.
Selected Zone occupied	Red-green LED blinks alternatingly for 60 seconds. Zone can be replaced within 60 seconds by short press on pairing button.

Device pairing fail	Red LED blinks 5 times.
App Pairing	Purple LED blinks until pairing successful.
Pair WC Failed	Red LED blinks 5 times.
Low Battery	Blue LED blinks.
Sensor Short/Open	Red LED blinks once every 10 seconds.
Floor Sensor Overheated	Orange LED blinks once every 10 seconds.
Floor Sensor Overcooled	Purple LED blinks once every 10 seconds.
Factory Reset	Orange LED blinks for 1 second.
Low Battery Cutoff	White LED turns on and stays on.
Firmware version	Red LED indicates the major version, Green LED indicate the minor version. E.g. 2 red 4 green means v2.4. Thermostat shows FW version after power on or factory reset.

Protection function

Heat cut off

When the room temperature is over 36°C, the heating output will be turned off.

Cooling cut off

When the room temperature is under 4°C, the cooling output will be cut off.

Short cycle protection

- i** When the cooling mode is enabled the minimum interval between On/OFF is 3 minutes.

Control Pattern – Span $\pm 0,5^{\circ}\text{C}$

Heating mode

The thermostat will start heating when the room temperature will get below the setpoint. It will stop the Heating function when the room temperature is on set point or above.

Cooling mode

The thermostat will start cooling when the room temperature gets above the setpoint. The thermostat will stop the Cooling function when the room temperature is on setpoint or below.

Technical specifications

Model:	SQ605RF(WB)
Power Supply:	AAAA battery 1,5V (x2)
Temperature setpoint range:	5°C-35°C
Control algorithm:	Span $\pm 0,5^{\circ}\text{C}$
Storage temperature:	-20°C - 60°C
Ambient temperature:	0°C - 45°C
Humidity (Non condensed)	5 – 95 % RH
Communication protocol:	ZigBee 2,4GHz
Mounting:	Surface mounting
Degree of protection:	IP30
Valve/Frost protection:	Yes/Yes: 5°C.
Heating and cooling:	Yes. Changeover by Wiring Centre
Dimensions (W x H x D)	86 x 86 x 19,5 mm